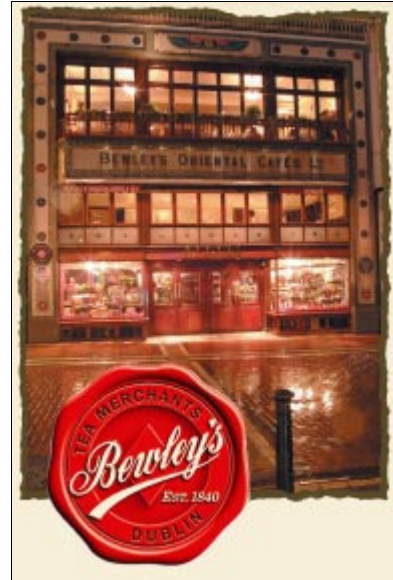


## Grammar Tenses Mix

# Bewley's Oriental Cafés

Fill the gaps with the correct tenses.

1. Bewley's (be) \_\_\_\_\_ an old Irish tea house chain.
2. The history of the famous Bewley's Oriental Cafés (begin) \_\_\_\_\_ in 1835 when Charles Bewley (import) \_\_\_\_\_ over 2000 chests (*Kisten*) of tea directly from the Chinese province of Canton to Dublin.
3. It (not / look) \_\_\_\_\_ like a great deal today, but back then it (be) \_\_\_\_\_ a coup: no man before had dared to import tea directly into Ireland.
4. Bewley's initiative (put) \_\_\_\_\_ an end to the East India Trading Company's tea monopoly which before 1835 had forced the Irish to import their tea from London.
5. Samuel Bewley's son Joshua also (become) \_\_\_\_\_ a tea merchant (*Händler*).
6. Like his father, he (import) \_\_\_\_\_ tea into Ireland.
7. The Irish (like) \_\_\_\_\_ the idea of not having to import old tea from London.
8. A tea expert (notice) \_\_\_\_\_ that even the poorest Irish people (buy) \_\_\_\_\_ only the finest tea.
9. By the end of the 19<sup>th</sup> century a tea culture had developed in Ireland.
10. In 1894, Joshua's son Ernest Bewley (want) \_\_\_\_\_ to stimulate the market for a product that had been rather unknown that far: coffee.
11. In the back of his shop in Dublin's George's Street, he (begin) \_\_\_\_\_ to run coffee making demonstrations.
12. His wife (bake) \_\_\_\_\_ scones (*Brotgebäck*) to go with the coffee, and the couple (*das Paar*) soon (find out) \_\_\_\_\_ that their idea (be) \_\_\_\_\_ extremely popular among customers.
13. That (mark) \_\_\_\_\_ the beginning of the first Bewley's Oriental Café.



14. In Dublin's Grafton Street, Ernest Bewley (open) \_\_\_\_\_ another Bewley's Oriental Café in 1927, on which he (spend) \_\_\_\_\_ nearly 60,000 Pound.
15. Still now the interior furnishings (*Innenausstattung*) and wonderful stain glass (*farbige Glasfenster*) (provide) \_\_\_\_\_ (*sorgen für*) a very special oriental flair.
16. During World War II, Bewley's (must restrict) \_\_\_\_\_ the supply of tea to an ounce per head, and many customers (switch) \_\_\_\_\_ to coffee.
17. Today, Bewley's (be) \_\_\_\_\_ Ireland's leading supplier of quality coffees and teas.
18. It (create) \_\_\_\_\_ a catering service for larger customers such as Trinity College and it (open) \_\_\_\_\_ cafés in book stores and Dublin Airport.
19. Bewley's Clipper Gold Tea and Espresso Prima (win) \_\_\_\_\_ Gold Awards in the London Great Taste Awards.



## Grammar Tenses Mix

# Bewley's Oriental Cafés

*Fill the gaps with the correct tenses.*

1. Bewley's **is** an old Irish tea house chain.
2. The history of the famous Bewley's Oriental Cafés **began** in 1835 when Charles Bewley **imported** over 2000 chests of tea directly from the Chinese province of Canton to Dublin.
3. It **does not look** like a great deal today, but back then it **was** a coup: no man before had dared to import tea directly into Ireland.
4. Bewley's initiative **put** an end to the East India Trading Company's tea monopoly which before 1835 had forced the Irish to import their tea from London.
5. Samuel Bewley's son Joshua also **became** a tea merchant.
6. Like his father, he **imported** tea into Ireland.
7. The Irish **liked** the idea of not having to import old tea from London.
8. A tea expert **noticed** that even the poorest Irish people **bought** only the finest tea.
9. By the end of the 19th century a tea culture had developed in Ireland.
10. In 1894, Joshua's son Ernest Bewley **wanted** to stimulate the market for a product that had been rather unknown that far: coffee.
11. In the back of his shop in Dublin's George's Street, he **began** to run coffee making demonstrations.
12. His wife **baked** scones to go with the coffee, and the couple soon **found out** that their idea **was** extremely popular among customers.
13. That **marked** the beginning of the first Bewley's Oriental Café.
14. In Dublin's Grafton Street, Ernest Bewley **opened** another Bewley's Oriental Café in 1927, on which he had **spent** nearly 60,000 Pound.
15. Still now the interior furnishings and wonderful stain glass **provide** a very special oriental flair.
16. During World War II, Bewley's **had to restrict** the supply of tea to an ounce per head, and many customers **switched** to coffee.
17. Today, Bewley's **is** Ireland's leading supplier of quality coffees and teas.
18. It **has created** a catering service for larger customers such as Trinity College and it **has opened** cafés in book stores and Dublin Airport.
19. Bewley's Clipper Gold Tea and Espresso Prima **have won** Gold Awards in the London Great Taste Awards.